

RAIN LEADER LINE PAINTED TO MATCH STRUCTURE

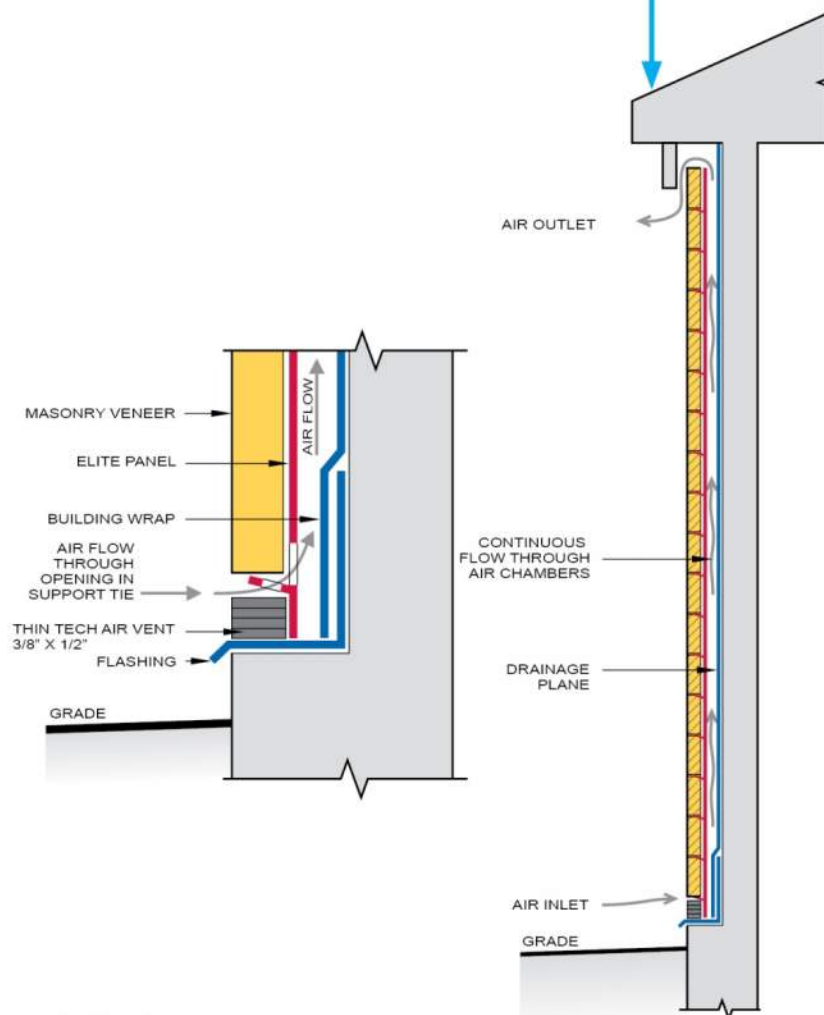
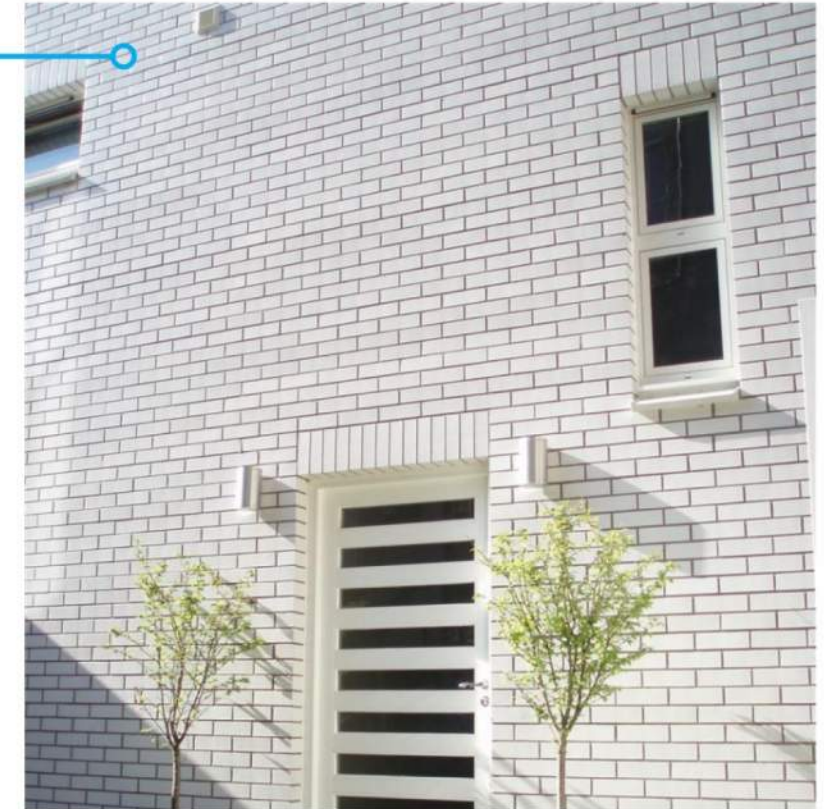


RAIN LEADER LINE PAINTED TO MATCH STRUCTURE





1. Glazed brick
2. Revised CIP Wood formliner
3. Thin brick ventilated wall construction (White & Black bricks)



AIR FLOW
SCALE : N.T.S.

GLAZED BRICK @ ARSENAL STADIUM





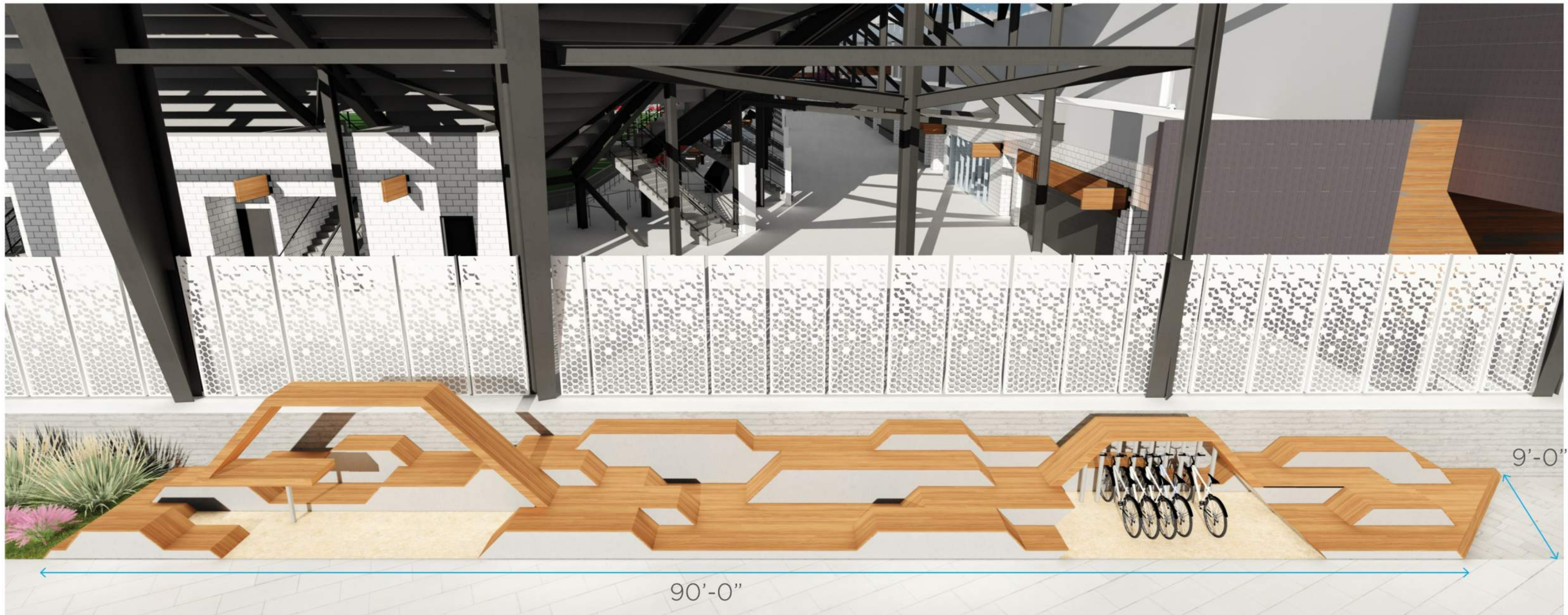
MATERIALS:

- CIP CONCRETE
- IPE WOOD
- PAINTED METAL PLANTER BOXES
- ALUMINUM ARM RESTS/ DIVIDER
- DECOMPOSED GRANITE WALKING SURFACE

PROGRAM:

- BIKE PARKING
- SEATING & GATHERING SPACE
- PLANTER BOXES





MATERIALS:

- CIP CONCRETE
- IPE WOOD
- DECOMPOSED GRANITE WALKING SURFACE

PROGRAM:

- BIKE PARKING
- SEATING & GATHERING SPACE
- TABLE SURFACE





152'-0"

9'-0"



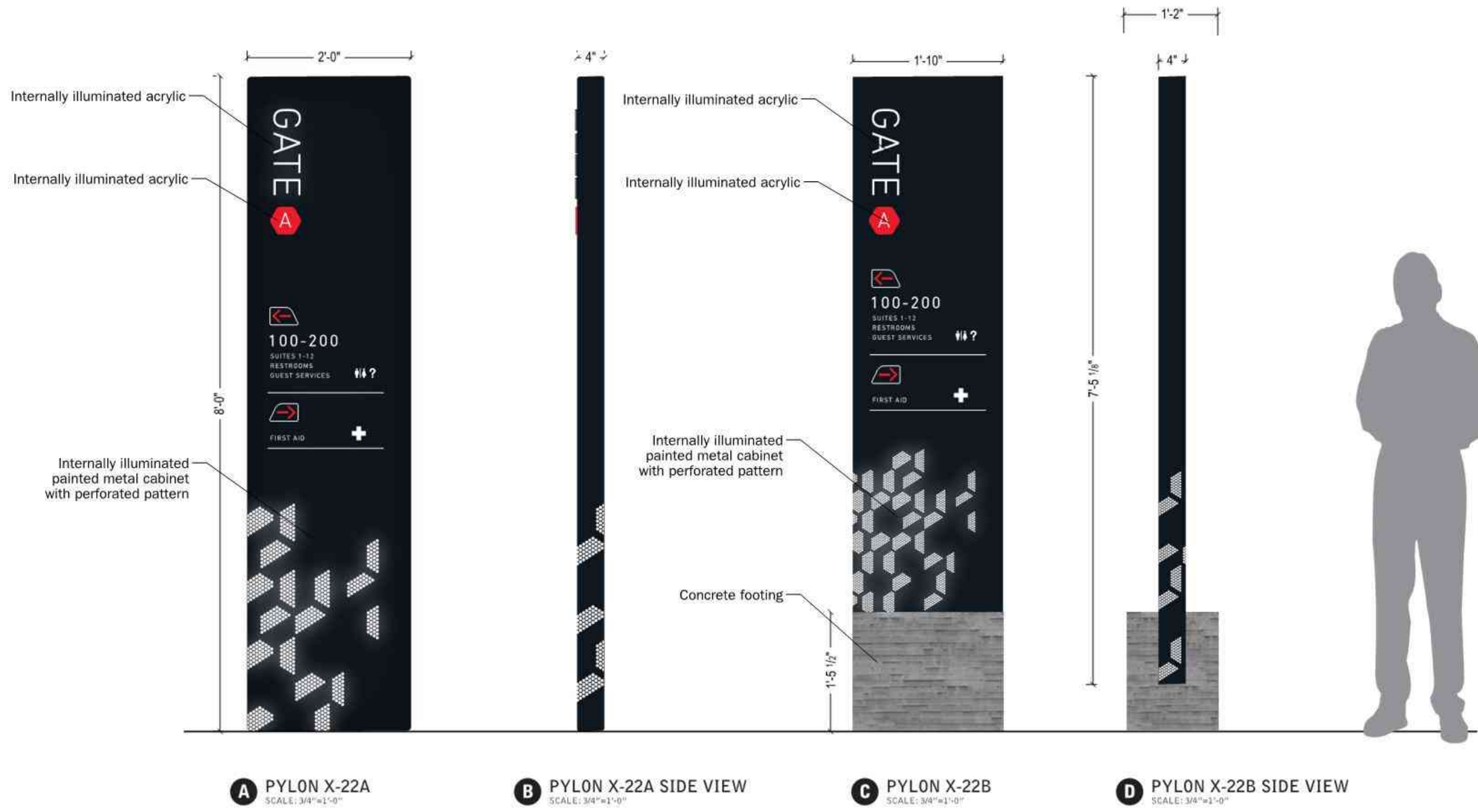
MATERIALS:

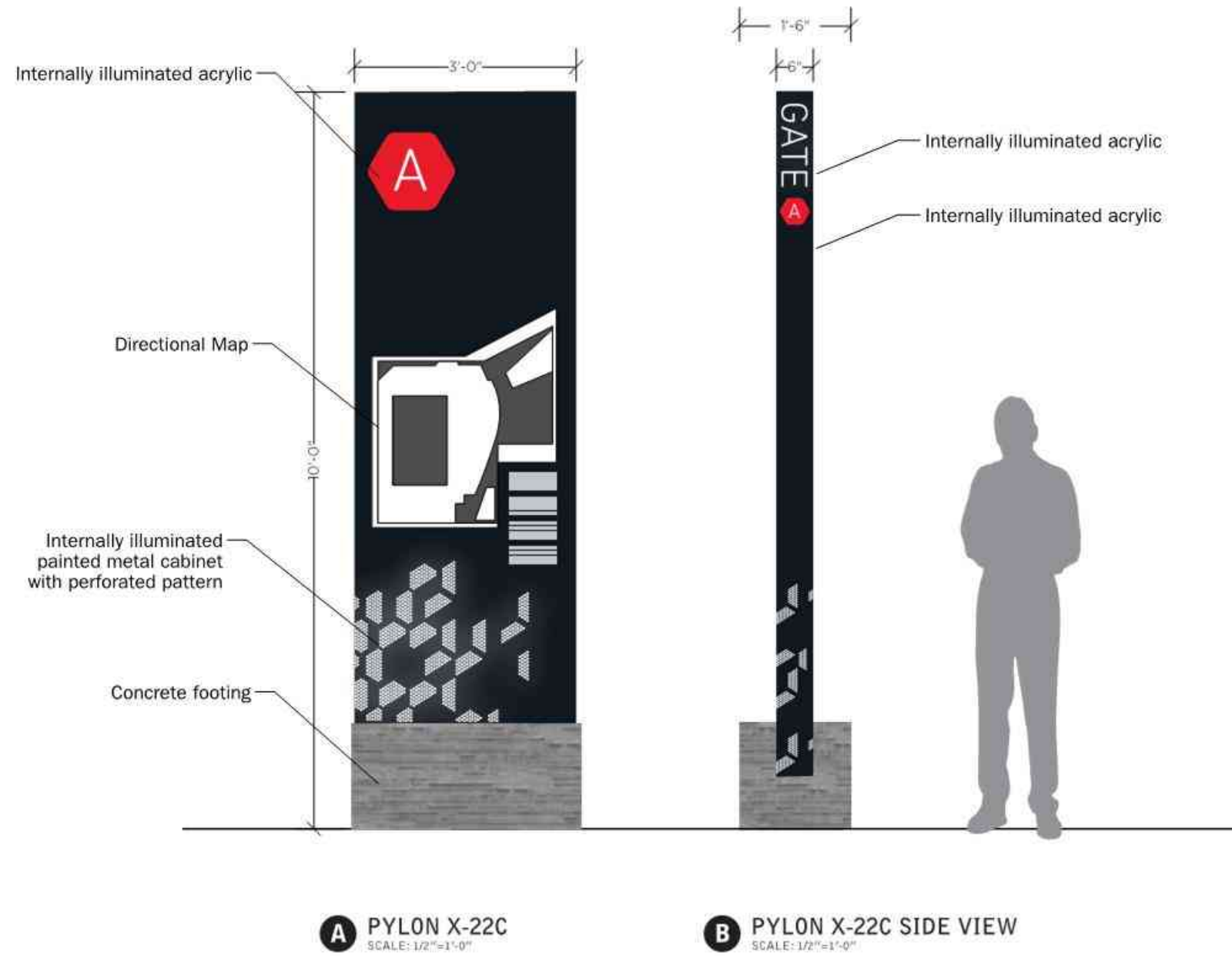
- CIP CONCRETE
- IPE WOOD
- DECOMPOSED GRANITE WALKING SURFACE

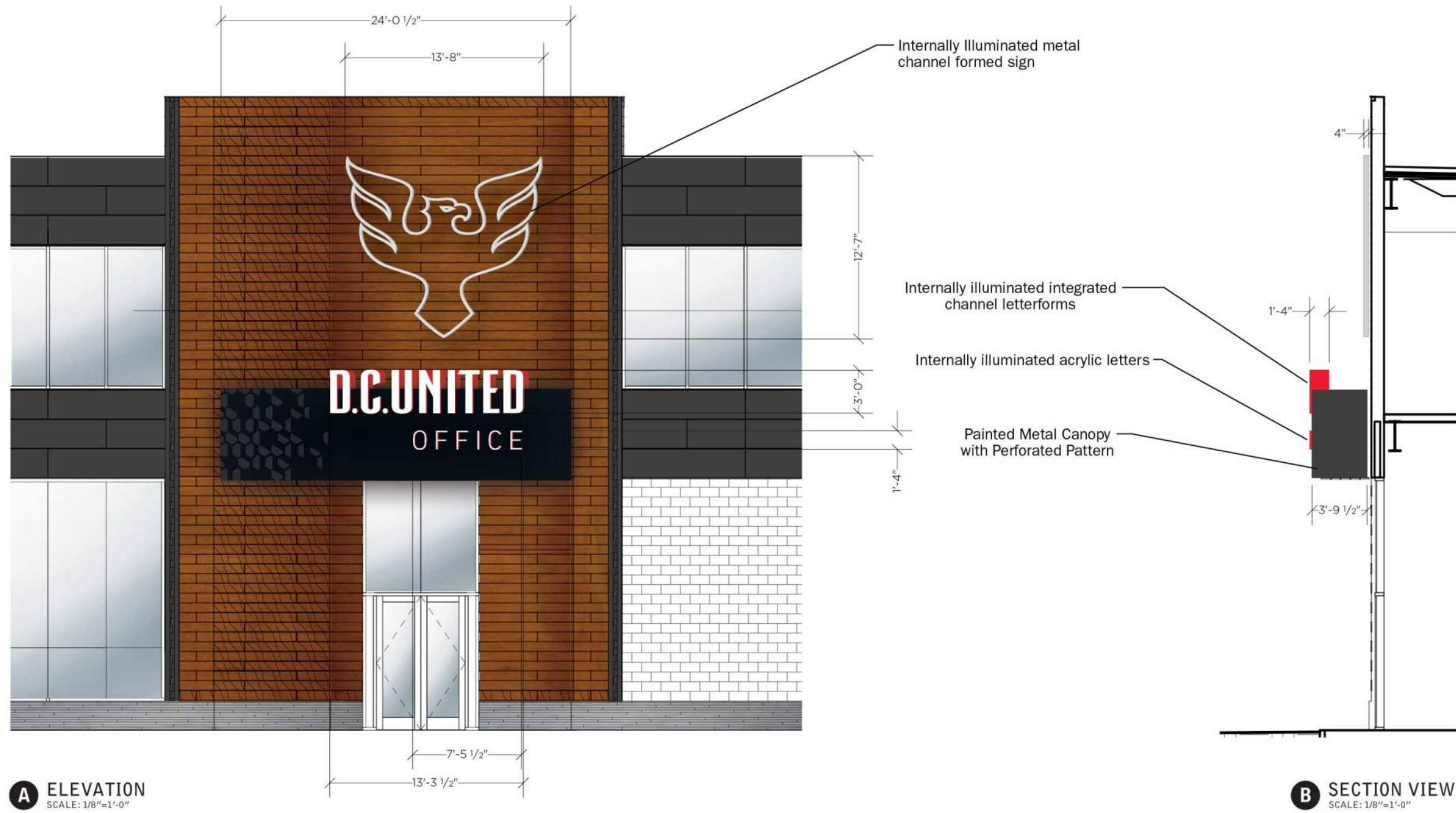
PROGRAM:

- SEATING & GATHERING SPACE









Internally illuminated and dimensional DCU logos. Painted metal and acrylic.

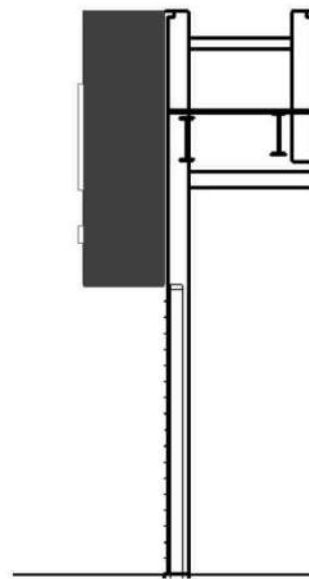


A WEST ELEVATION
SCALE: 1/8"=1'-0"

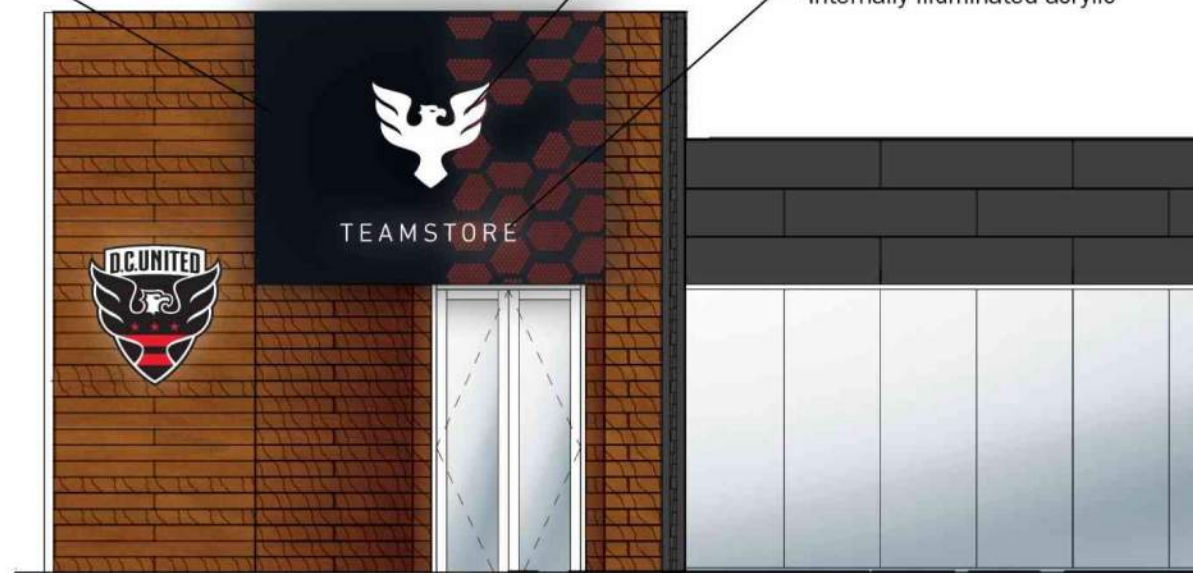
Internally illuminated painted metal cabinet with custom routed face & backed acrylic

Internally illuminated acrylic

Internally illuminated acrylic



C SECTION VIEW
SCALE: 1/8"=1'-0"



B FRONT ELEVATION
SCALE: 1/8"=1'-0"

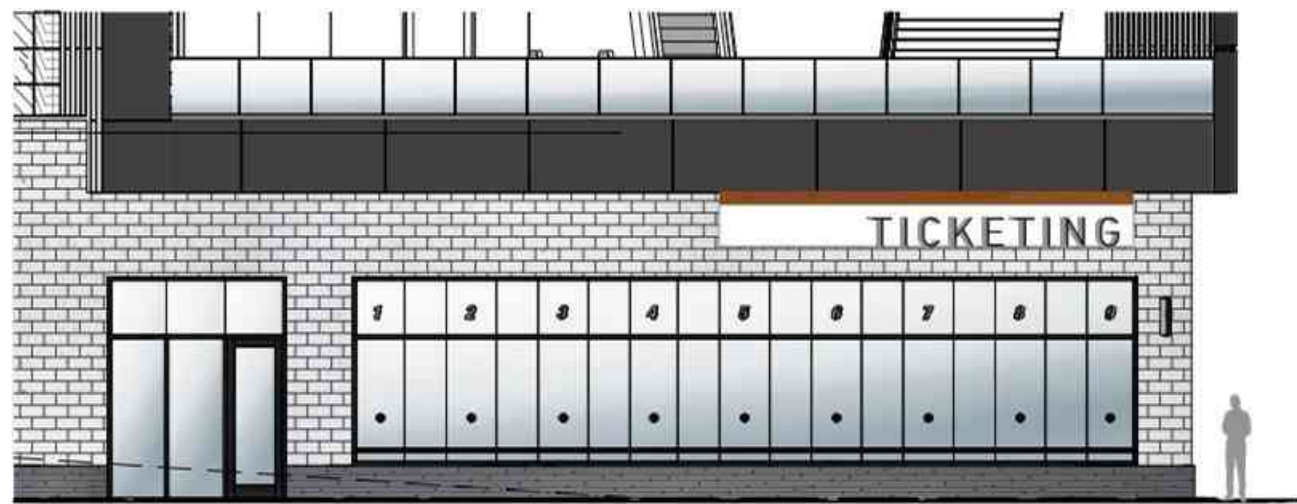
X-07 BIKE VALET ID
X-13 TICKETING ID



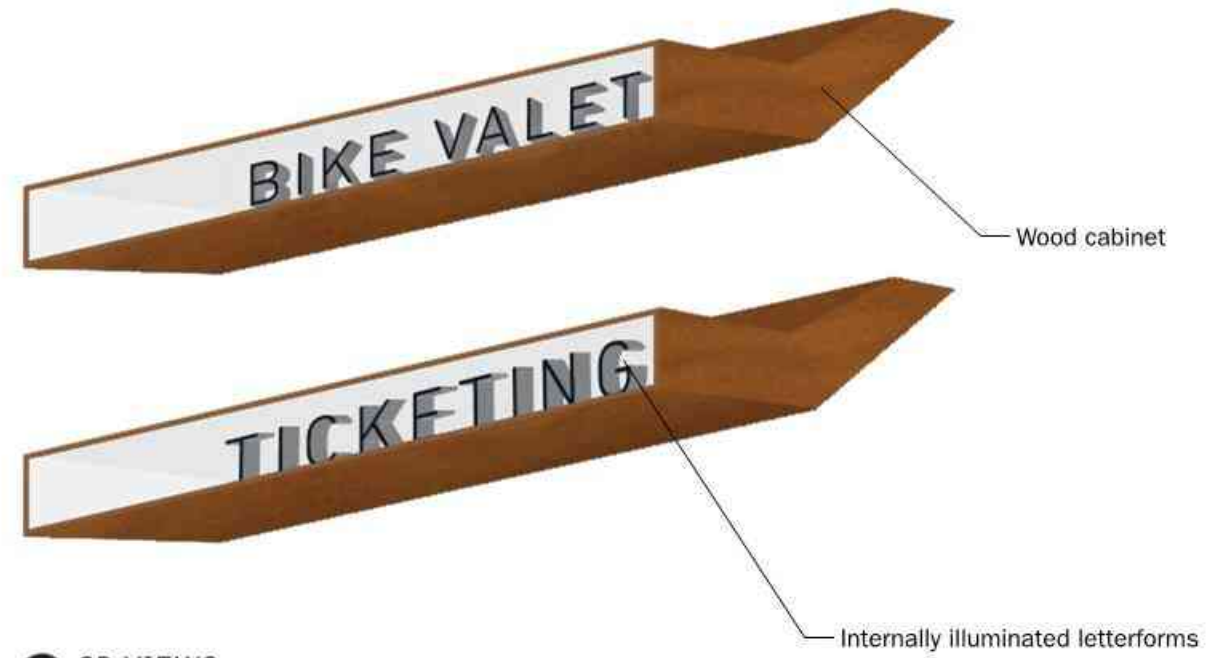
A X-07 BIKE VALET DETAIL
SCALE: 1/4"=1'-0"



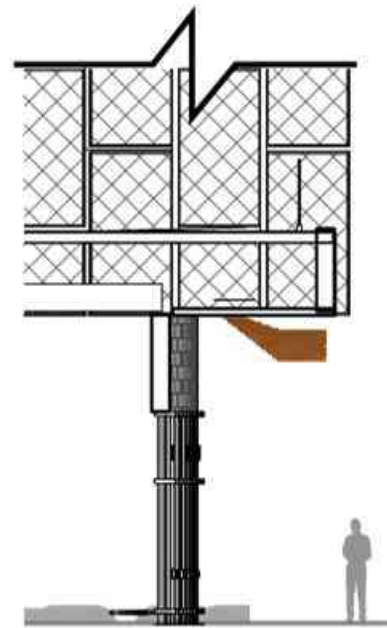
B X-13 TICKETING DETAIL
SCALE: 1/4"=1'-0"



D ELEVATION
SCALE: 3/32"=1'-0"



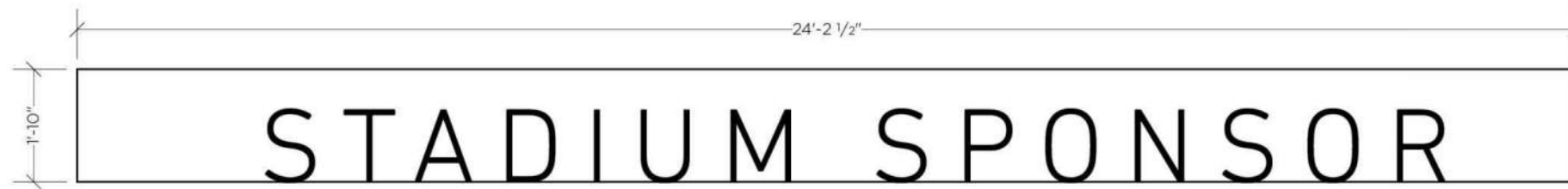
C 3D VIEWS



E SECTION VIEW
SCALE: 3/32"=1'-0"



F REFERENCE IMAGES

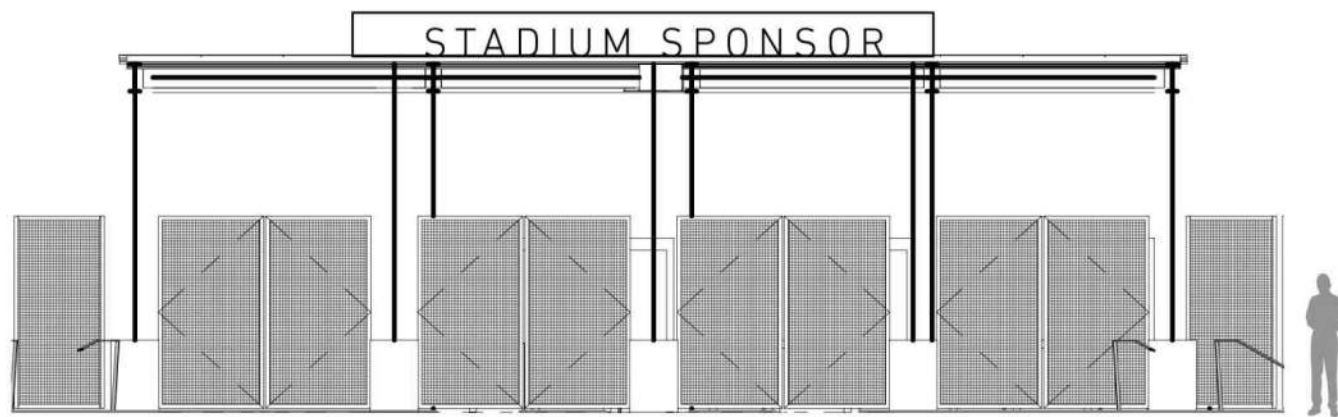


A DETAIL
SCALE: 3/8"=1'-0"

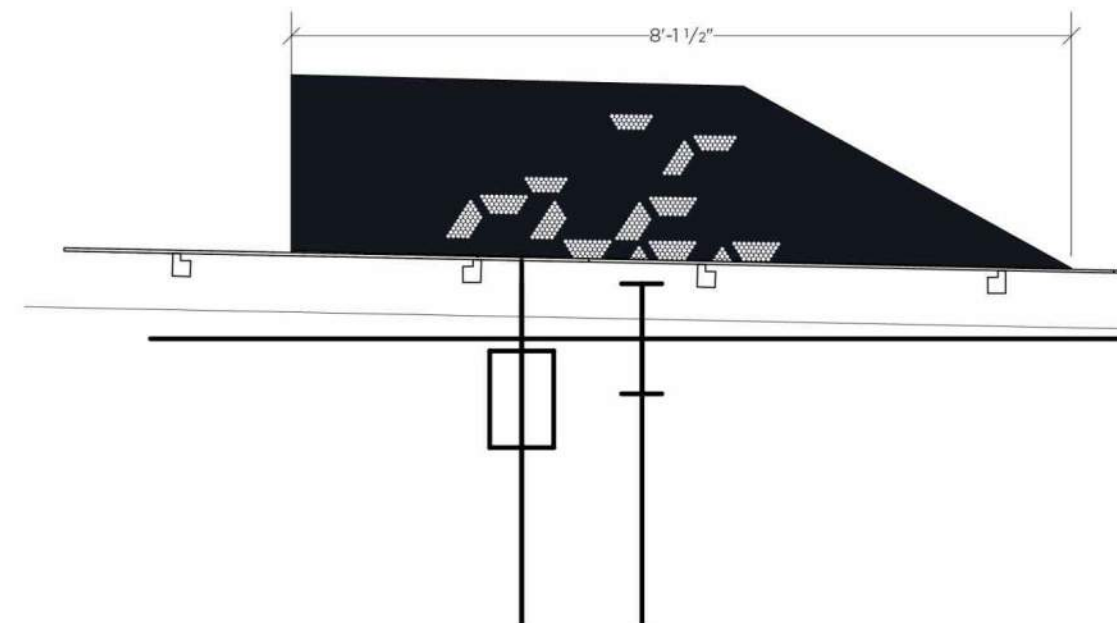


B 3D VIEW

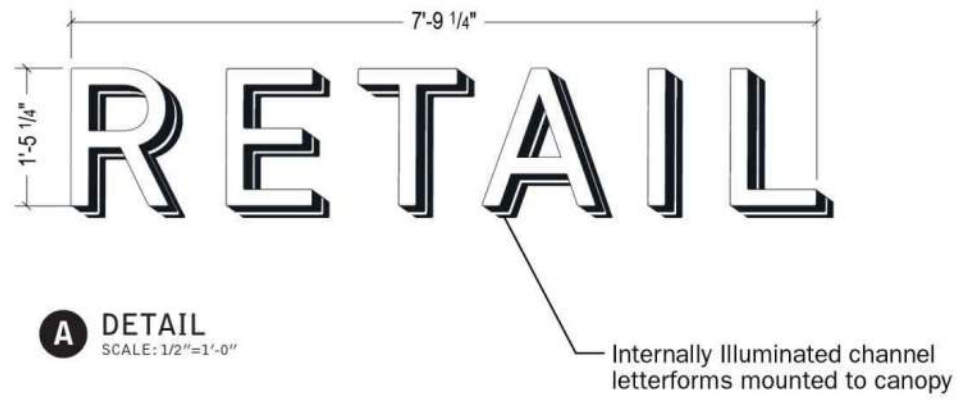
Internally illuminated letterforms



C ELEVATION
SCALE: 1/8"=1'-0"



D SIDE VIEW
SCALE: 1/2"=1'-0"



Internal illuminated white acrylic cabinet blade sign with painted metal mounting support



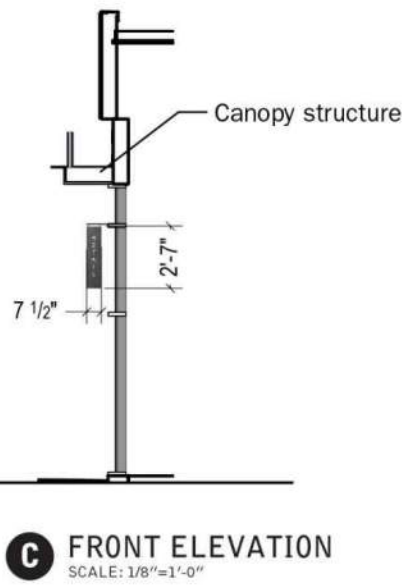
Wood cabinet blade sign with internally illuminated acrylic push-throughs



Metal panel blade sign with white dimensional lettering and painted metal mounting support



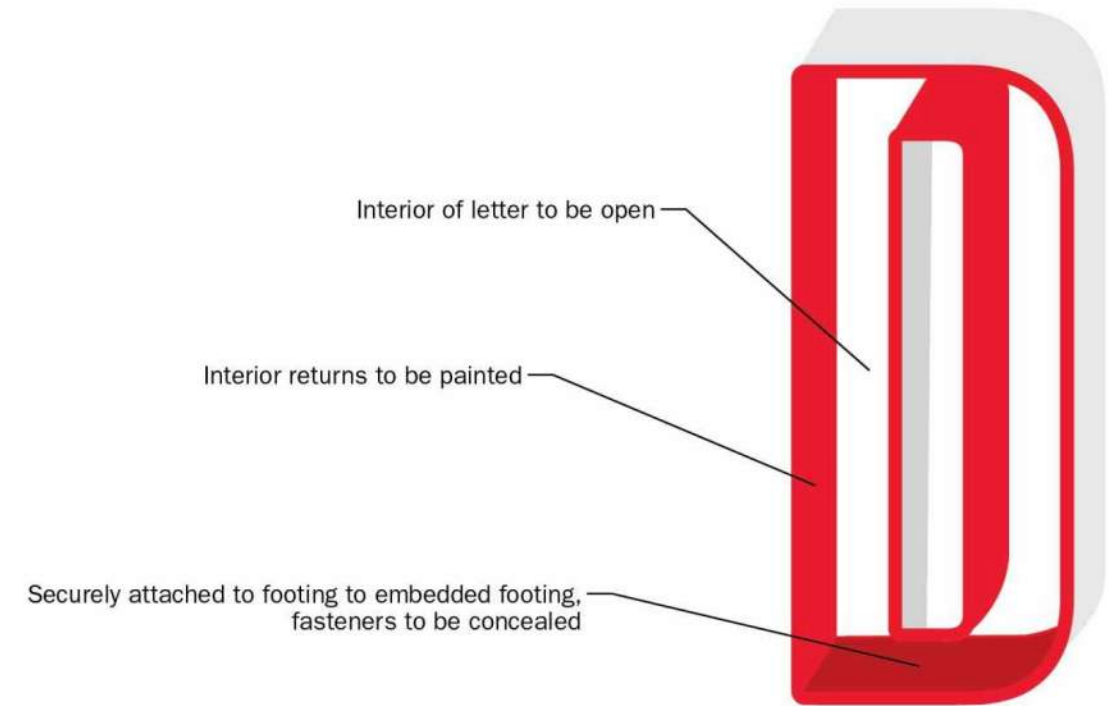
Metal panel blade sign with white dimensional lettering and stainless steel mounting sleeve



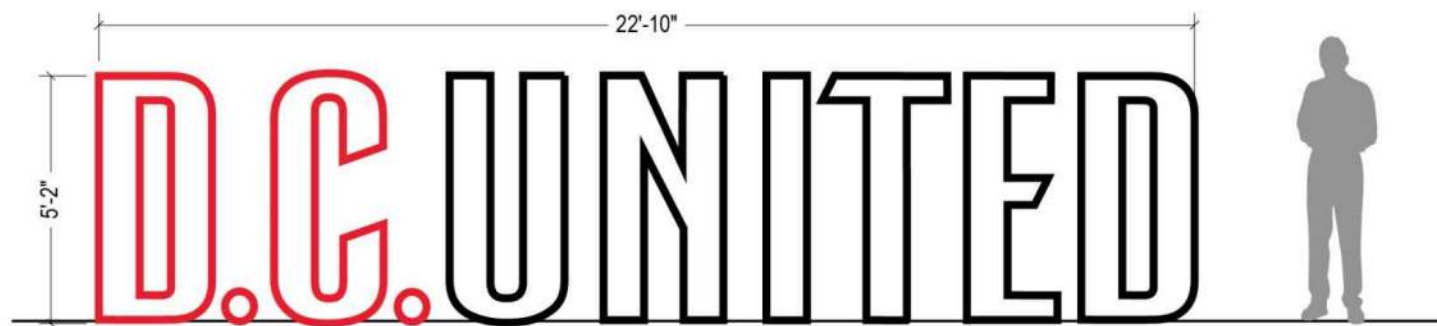
D BLADE OPTIONS
SCALE: 3/4"=1'-0"



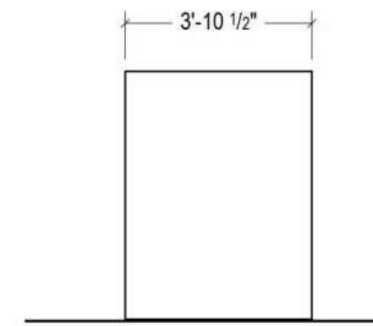
C 3D VIEW



D DETAIL 3D VIEW



A FRONT ELEVATION
SCALE: 1/4"=1'-0"



B SIDE VIEW
SCALE: 1/4"=1'-0"

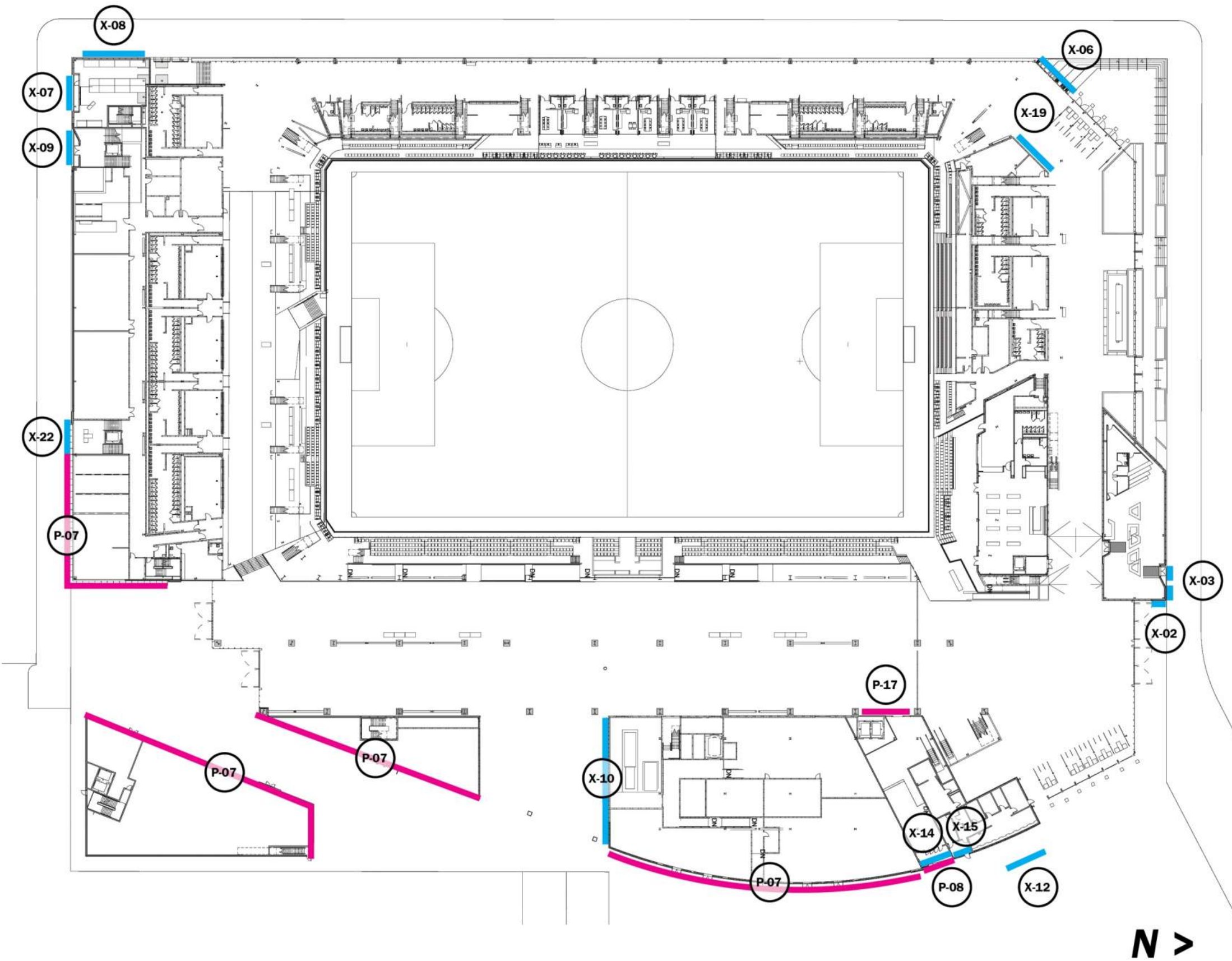
100 CONCOURSE LEVEL PLAN

SIGN TYPE P - SPONSORSHIP SIGNAGE

- P-07** RETAIL SIGNAGE
- P-08** GATE SPONSOR PORTAL - NORTHEAST GATE
- P-17** CLUB SPONSOR ENTRY ID

SIGN TYPE X - EXTERIOR BRAND GRAPHICS

- X-02** TEAM STORE DCU LOGOS
- X-03** TEAM STORE BRANDING
- X-06** DC UNITED LARGESCALE LETTERS
- X-07** BIKE VALET ID
- X-08** BIKE VALET WINDOW GRAPHICS
- X-10** DC UNITED BRANDING
- X-12** DC UNITED LARGESCALE LETTERS
- X-14** PREMIUM ENTRY ID
- X-15** TICKETING SALES ID
- X-19** DC UNITED LOGO
- X-22** DCU STAFF ENTRY



4.21 GRAPHICS & SIGNAGE LOCATION PLAN AND TYPE DESCRIPTION

SPONSOR & BRANDING SIGNAGE LOCATIONS ARE INTERCHANGABLE DEPENDING ON THE SPONSOR PACKAGES

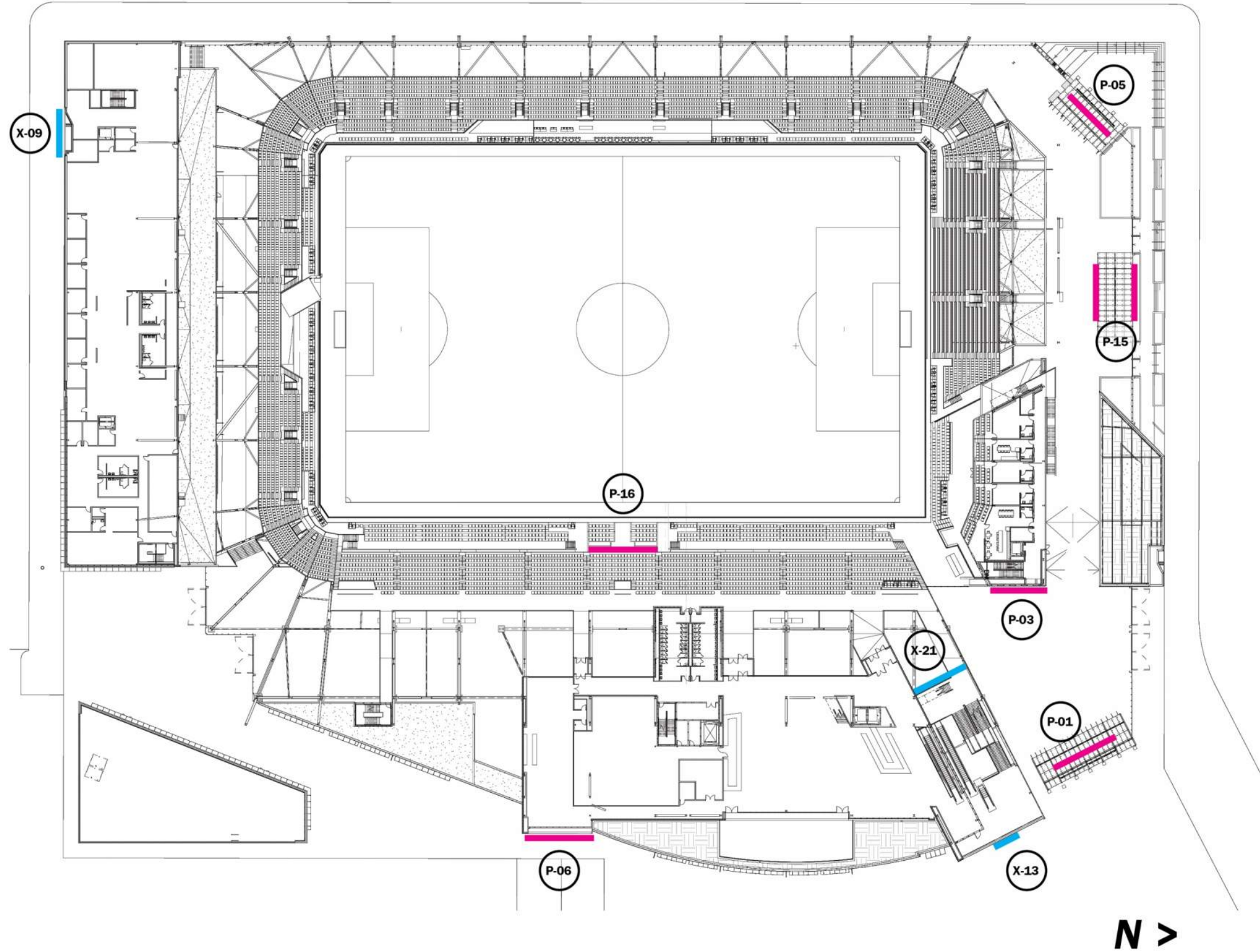
200 CLUB LEVEL PLAN

SIGN TYPE P - SPONSORSHIP SIGNAGE

- P-01** STADIUM SPONSOR ID - NORTHEAST GATE
- P-03** CLUB SPONSOR
- P-05** GATE SPONSOR PORTAL - NORTHWEST GATE
- P-06** GATE SPONSOR PORTAL - S ST. ENTRY GATE
- P-15** BAR SPONSOR ID
- P-16** STADIUM SPONSOR ID - PLAYER SEATS

SIGN TYPE X - EXTERIOR BRAND GRAPHICS

- X-09** DC UNITED OFFICE ID
- X-13** TICKETING ID
- X-21** DC UNITED LOGO



SPONSOR & BRANDING SIGNAGE LOCATIONS ARE INTERCHANGABLE DEPENDING ON THE SPONSOR PACKAGES

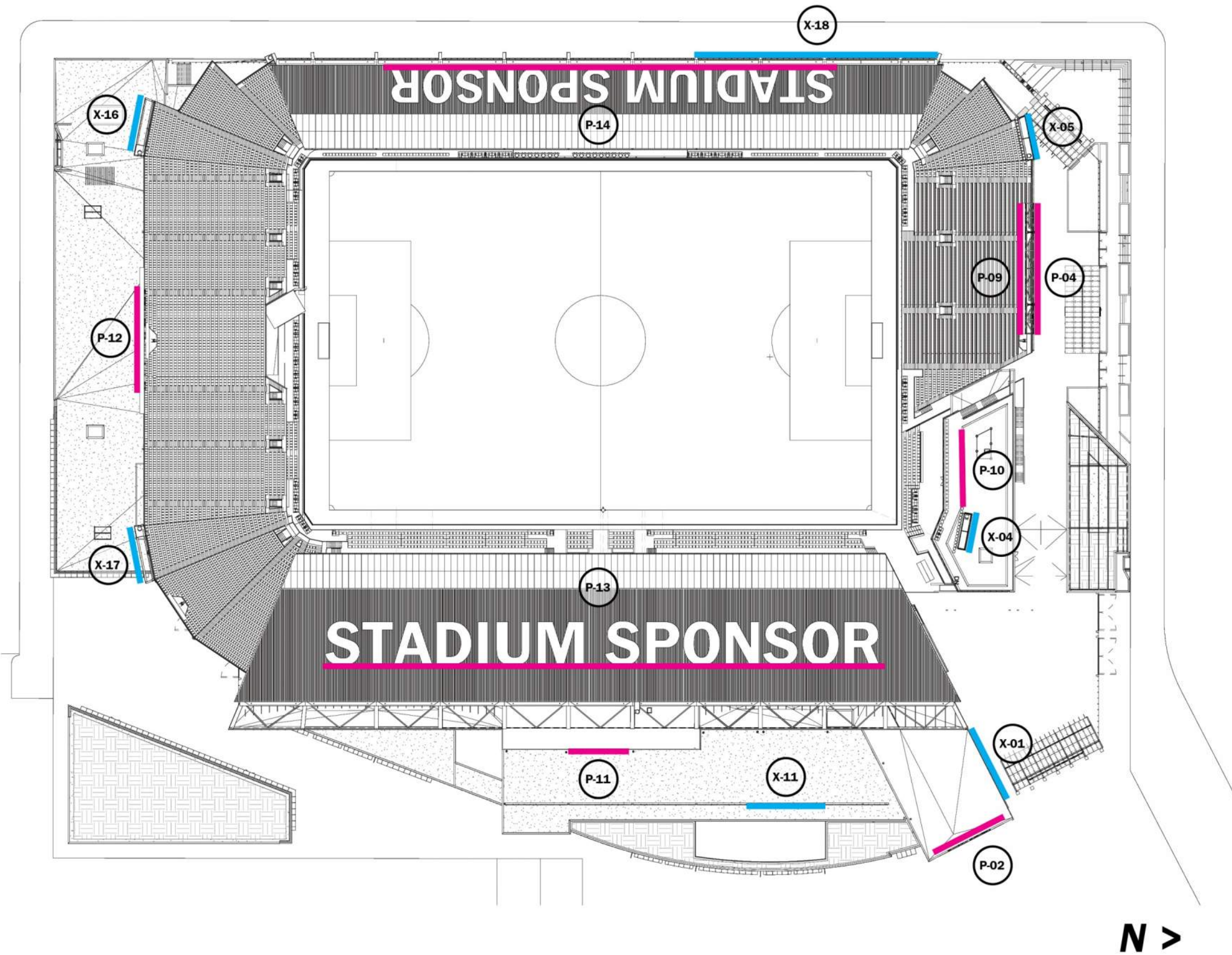
500 ROOF LEVEL PLAN

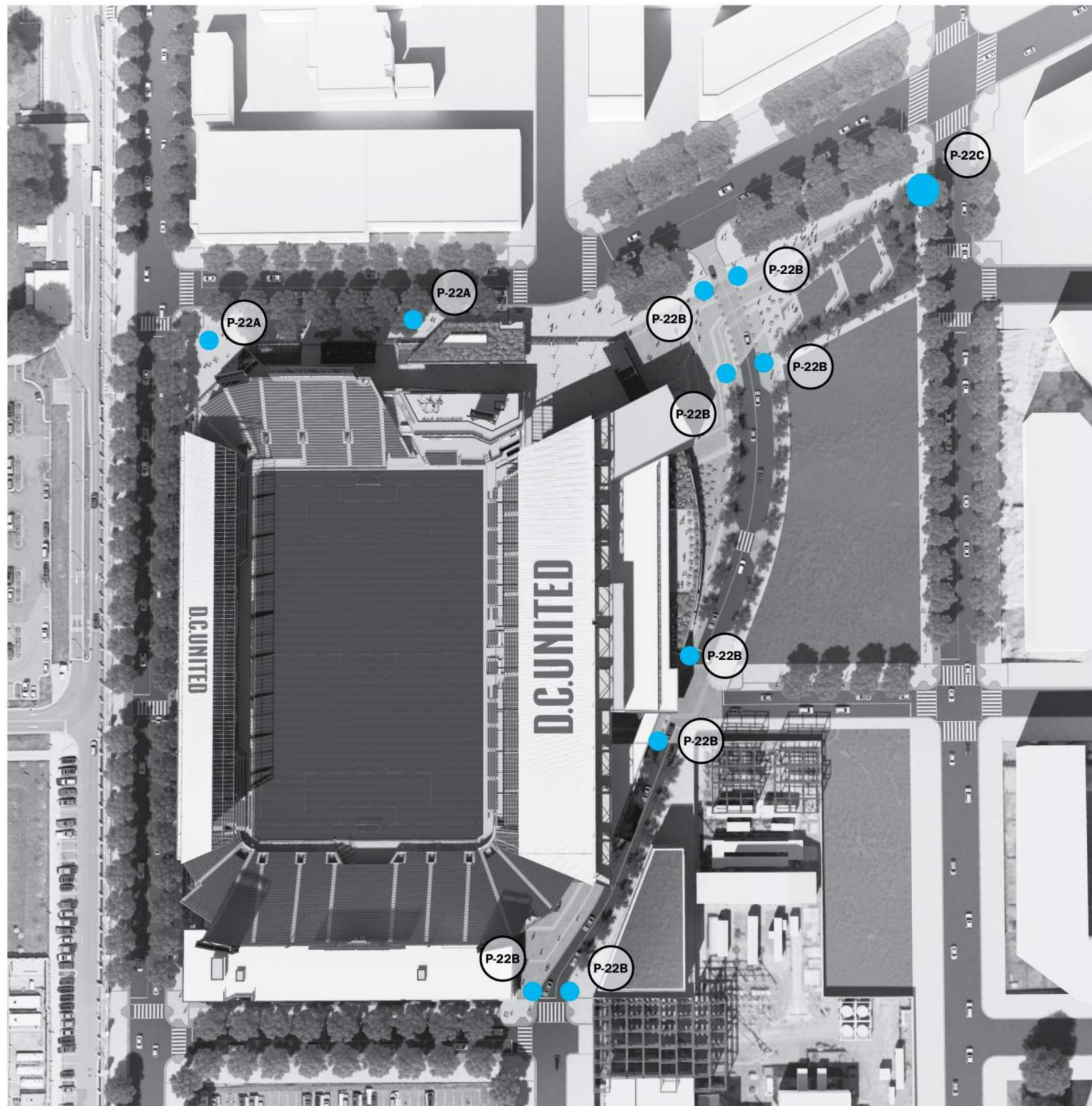
SIGN TYPE P - SPONSORSHIP SIGNAGE

- P-02** STADIUM SPONSOR ID - TOP OF STAIR TOWER
- P-04** STADIUM ID - SPONSOR / DC UNITED
- P-09** STADIUM SPONSOR ID - NORTH INTERIOR BOWL
- P-10** BAR SPONSOR ID
- P-11** STADIUM SPONSOR ID - SOUTH INTERIOR BOWL
- P-12** STADIUM SPONSOR ID - SOUTH
- P-13** STADIUM SPONSOR ID - EAST ROOF CANOPY
- P-14** STADIUM SPONSOR ID - WEST ROOF CANOPY

SIGN TYPE X - EXTERIOR BRAND GRAPHICS

- X-01** BANNER GRAPHICS
- X-04** DC UNITED BANNER
- X-05** DC UNITED BANNER
- X-11** DC UNITED BRANDING
- X-16** DC UNITED BANNER
- X-17** DC UNITED BANNER
- X-18** STADIUM DC UNITED ID





SITE PYLON PLAN

SIGN TYPE X - EXTERIOR BRAND GRAPHICS

- X-22A** PYLON DIRECTIONAL (w/o BASE)
- X-22B** PYLON DIRECTIONAL (BASE)
- X-22C** PYLON DIRECTIONAL (LARGE)

SPONSOR & BRANDING SIGNAGE
LOCATIONS ARE INTERCHANGABLE
DEPENDING ON THE SPONSOR PACKAGES



SPONSORSHIP & EXTERIOR BRAND SIGNAGE INDEX

SIGN TYPE P - SPONSORSHIP SIGNAGE

- P-01** STADIUM SPONSOR ID - NORTHEAST GATE
Internally illuminated letterforms with cabinet (35'-5" x 2'-6").
- P-02** STADIUM SPONSOR ID - TOP OF STAIR TOWER
Internally illuminated metal channel letterforms (31'-10" x 2'-11").
- P-03** CLUB SPONSOR
Internally illuminated metal channel letterforms and logo (33'-10" x 18'-0").
- P-04** STADIUM ID - SPONSOR / DC UNITED
Internally illuminated metal channel letterforms mounted to mesh (49'-9" x 86'-9").
- P-05** GATE SPONSOR PORTAL - NORTHWEST GATE
Aluminum channel letterforms on painted metal panel portal (2'-6" x 35'-5").
- P-06** GATE SPONSOR PORTAL - S ST. ENTRY GATE
Aluminum channel letterforms on painted metal panel portal (23'-0" x 2'-4").
- P-07** RETAIL SIGNAGE
Material and size varies.
- P-08** GATE SPONSOR PORTAL - NORTHEAST GATE
Metal dimensional letterforms (6'-0" x 4'-10").
- P-09** STADIUM SPONSOR ID - NORTH INTERIOR BOWL
Internally illuminated metal channel letterforms mounted to painted metal cabinet (86'-9" x 29'-7").
- P-10** BAR SPONSOR ID
Internally illuminated metal channel letterforms (57'-2" x 3'-5").
- P-11** STADIUM SPONSOR ID - SOUTH INTERIOR BOWL
Internally illuminated metal channel letterforms mounted to painted metal cabinet (97'-0" x 12'-0").
- P-12** STADIUM SPONSOR ID - SOUTH
Internally illuminated metal channel letterforms mounted to painted metal cabinet (97'-0" x 12'-0").
- P-13** STADIUM SPONSOR ID - EAST ROOF CANOPY
Internally illuminated channel letterforms (443'-3" x 75'-0").
- P-14** STADIUM SPONSOR ID - WEST ROOF CANOPY
Internally illuminated channel letterforms (433'-7" x 32'-3").
- P-15** BAR SPONSOR ID
Internally illuminated metal channel letterforms (56'-10" x 0'-11").
- P-16** STADIUM SPONSOR ID - PLAYER SEATS
Internally illuminated metal channel letterforms mounted to painted metal cabinet (42'-8" x 3'-5").
- P-17** CLUB SPONSOR ENTRY ID
Metal channel letterforms (36'-6" x 3'-10").

SIGN TYPE X - EXTERIOR BRAND GRAPHICS

- X-01** BANNER GRAPHICS
Printed mesh fabric banner (39'-10 1/2" x 33'-9").
- X-02** TEAM STORE DCU LOGOS
Internally illuminated and dimensional DCU logos. Painted metal and acrylic (5'-6" x 5'-11").
- X-03** TEAM STORE BRANDING
Internally illuminated painted metal cabinet with perforated metal cabinet (14'-6" x 11'-5").
- X-04** DC UNITED BANNER
Printed mesh fabric banner (24'-10" x 34'-0").
- X-05** DC UNITED BANNER
Printed mesh fabric banner (35'-6" x 29'-10").
- X-06** DC UNITED LARGESCALE LETTERS
Internally illuminated metal channel letterforms (50'-0" x 7'-0").
- X-07** BIKE VALET ID
Internally illuminated metal channel letterforms inset into wood cabinet (23'-0" x 2'-4").
- X-08** BIKE VALET WINDOW GRAPHICS
Die-cut vinyl graphics applied to glass (50'-9" x 14'-10").
- X-09** DC UNITED OFFICE ID
Internally illuminated metal channel letterform and perforated metal canopy (Logo: 12'-7" x 13'-8" / Type: 24'-0" x 6'-0").
- X-10** DC UNITED BRANDING
Printed vinyl graphics (14'-6" x 11'-5").
- X-11** DC UNITED BRANDING
Printed vinyl graphics with metal channel letters (80'-0" x 12'-0").
- X-12** DC UNITED LARGESCALE LETTERS
Freestanding dimensional metal letterforms (22'-10" x 5'-2").
- X-13** TICKETING ID
Internally illuminated metal channel letterforms inset into wood cabinet (23'-0" x 2'-4").
- X-14** PREMIUM ENTRY ID
Internally illuminated metal channel letterforms (12'-9" x 0'-10 1/2").
- X-15** TICKETING SALES ID
Metal dimensional letterforms (9'-11 1/2" x 1'-2").
- X-16** DC UNITED BANNER
Printed mesh fabric banner (38'-5" x 36'-5 1/2").
- X-17** DC UNITED BANNER
Printed mesh fabric banner (38'-5" x 36'-5 1/2").
- X-18** STADIUM DC UNITED ID
Internally illuminated metal channel letterforms (75'-8" x 17'-1 1/2").
- X-19** DC UNITED LOGO
Internally illuminated and dimensional DCU logo. Painted metal and acrylic (33'-3 1/2" x 15'-3 1/2").
- X-20** DC UNITED LOGO
Internally illuminated and dimensional DCU logo. Painted metal and acrylic (37'-7" x 23'-1").
- X-21** DCU STAFF ENTRY
Metal channel letterforms (0'-11" x 9'-9").
- X-22A** PYLON DIRECTIONAL (w/o BASE)
Internally illuminated directional pylon. Painted metal and acrylic (2'-0" x 8'-0").
- X-22B** PYLON DIRECTIONAL (BASE)
Internally illuminated directional pylon. Painted metal and acrylic (1'-10" x 8'-0").
- X-22C** PYLON DIRECTIONAL (LARGE)
Internally illuminated directional pylon. Painted metal and acrylic (3'-0" x 10'-0").